



UNIVERSITAS GADJAH MADA

COVID-19 Case Management Webinar Series:
Home/Community Care Management of Patients
with Non-Severe COVID-19, WHO, Geneva, 04
August 2021

SONJO: Community Isolation Shelter for COVID-19 Patients



Rimawan Pradiptyo, PhD
Head, Department of Economics,
Faculty of Economics and Business, Universitas Gadjah Mada
and Initiator of SONJO

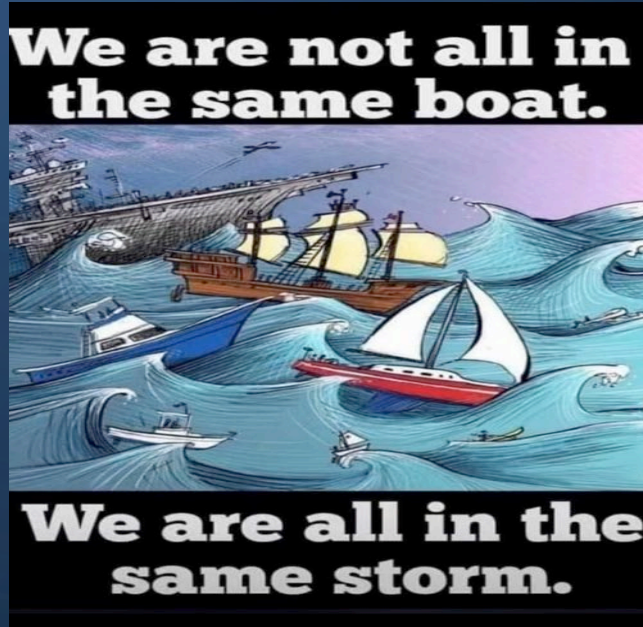


COVID-19: Is It a Disaster or a War?

- COVID-19 is a common enemy (non rival & non excludable)
- No one knows when the pandemic will last (as if playing an infinitely repeated game)
- The sustainability of the movement is paramount.
- The dominant strategies are:
 1. Expect the unexpected: in term of the impact of the pandemic;
 2. Thinking Innovatively: in term of the alternative solutions.
 3. Resource mobilization to tackle the COVID-19 and its impacts in our region/ neighborhood



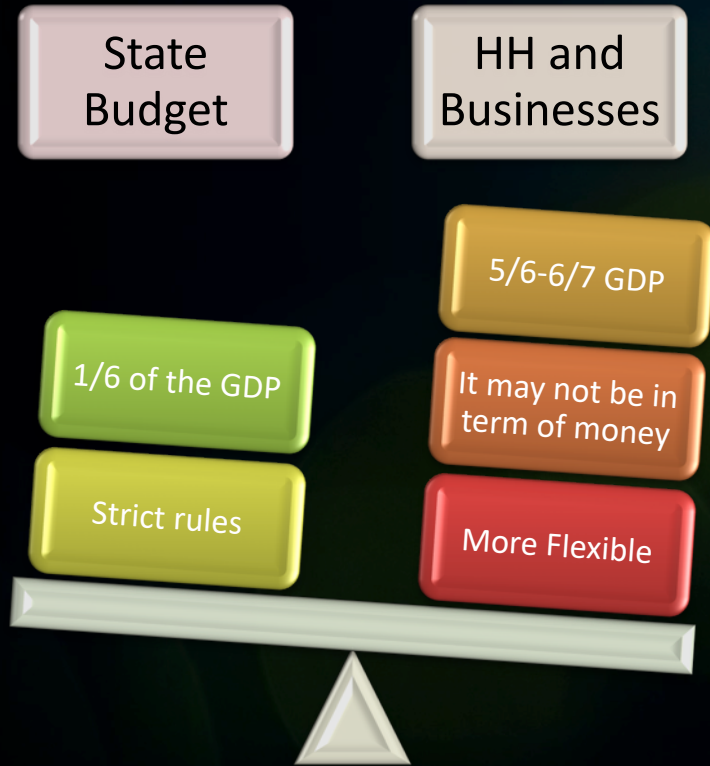
We are not in the sea & we are linked by internet



The poster which was so popular in Indonesia in March 2020

The way of thinking in SONJO since 24 March 2020

How to Mobilize Resources?



- During war/ pandemic/ economic crisis, logistic (resource) is a paramount
- Where are the resources? The state budget of Indonesia is only 1/6 of the GDP and 5/6 of the GDP are own by the households and businesses.
- The SMEs contribute to 50% of the economy.
- *Sambatan* is a traditional form of communal work in Jawa, which transforms time and abandon labor to compensate the lack of capital.
- SONJO (*Sambatan Jogja*) uses a similar approach with using WAGs.

SONJO (Sambatan Jogja)

- SONJO is a humanitarian movement to minimize the impact of Covid-19 in the province of Yogyakarta. The SONJO was formed on 24 March 2020.
- We use WhatsApps Group (WAG) to coordinate and to conduct communal works in the areas of health, economy and education.
- A study shows, on average, individuals in Indonesia spent 3,5 hours/day to access social media in various forms.
- Cultural consideration is heavily used in the programs of the SONJO.



The Focus of the SONJO:

**Vulnerable people and people at risk
owing to the pandemic Covid-19**

The Values of the SONJO:

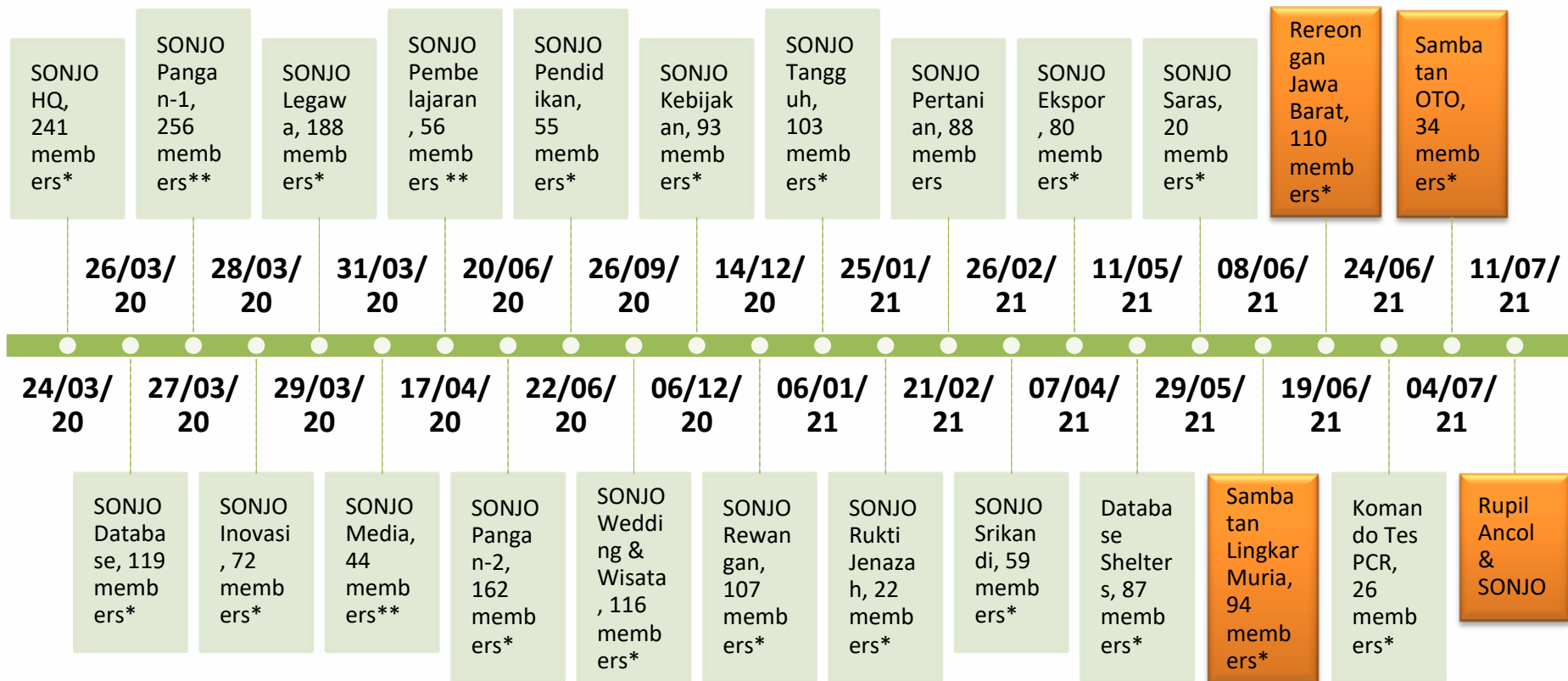
**Integrity, Transparency, Empathy, and
Sinergy**

Hastag:

- **#OraAnaSingKeri (#NoOneLeftInDespair)**

Website: Sonjo.id/

The Development of 24 WAGs of the SONJO



*) technical WAG; **) supporting WAG

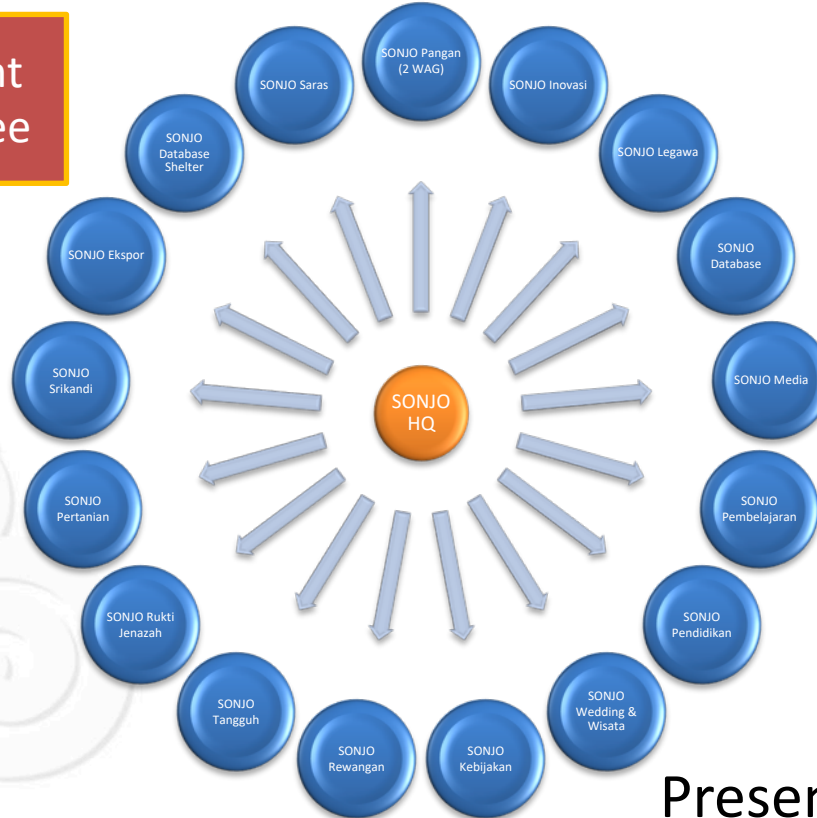
The Development of SONJO



Compliant
Committee



24 March 2020



Website

Database

Apps

Social
Media

Present Day

No Funding Required

- SONJO is not a charity
 - SONJO is not depended on funding from other institutions, including the government.
- SONJO is a movement (self-help group)
 - Sharing burden, sharing responsibility
 - Focus on improving resiliency of society
 - No funding is required, and each member contributes according to their skills/expertise
 - SONJO creates public goods aims to reduce transaction costs of people during the COVID-19 pandemic.

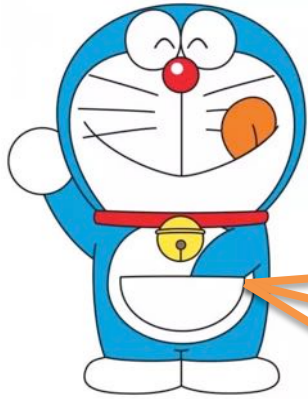


Self
Help
Group



Charity

Reducing Transaction Costs by Creating Public Goods



Source: celebrity.okezone.com



Source: pngegg.com

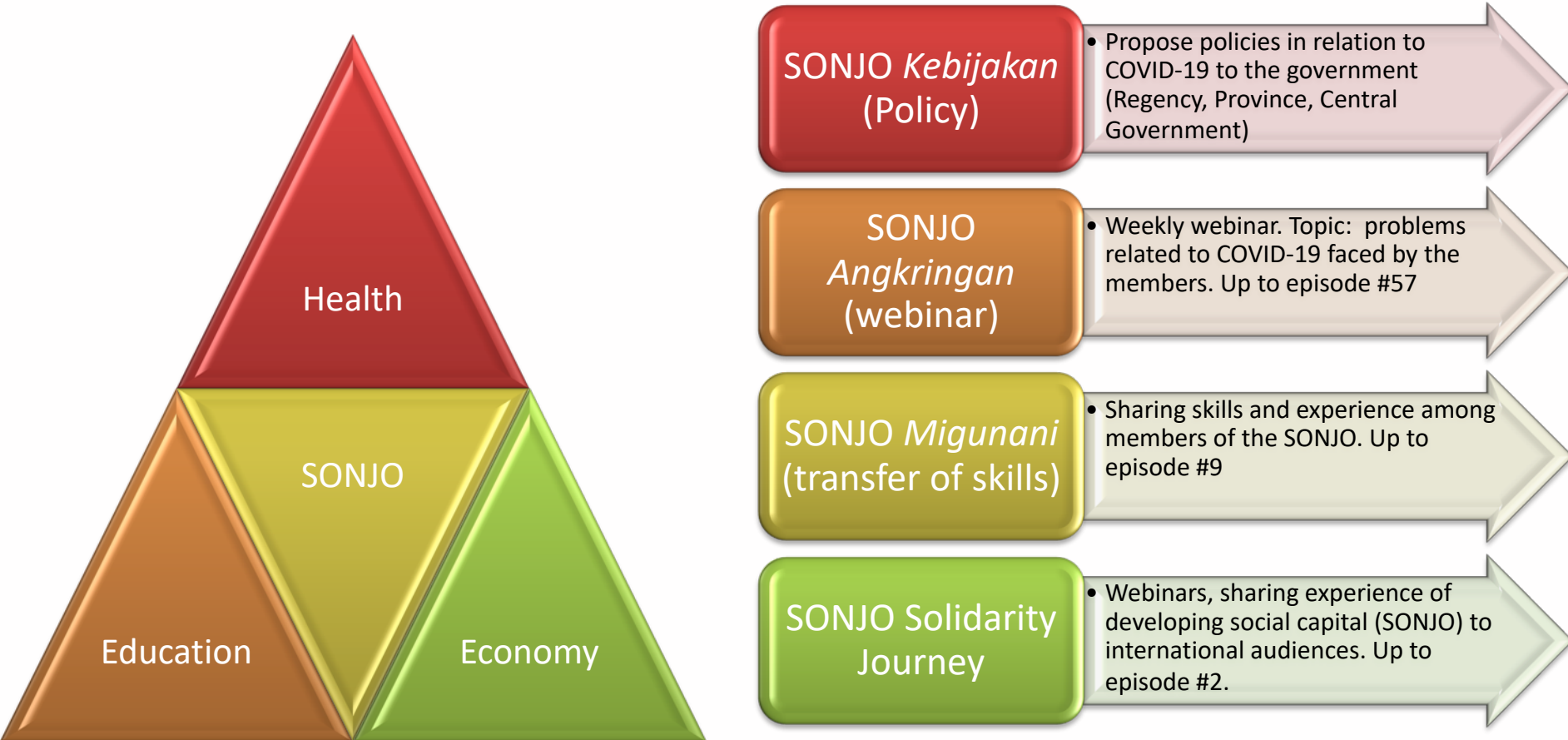
Health

Economy

Education

Public Goods

Coverage of the SONJO



Programs in Economy

#1. Database Sonjo Pangan (Database of grocery stores, traditional markets and restaurants)

#2. SONJO Ngabuburit (promoting culinary products during the holly mount of Ramadan)

#3. Etalase Pasar SONJO (EPS) (a show room app for SMEs)

#4. SONJO HampersFest (promoting parcel for special occasion)

#5. SONJO Jagong (promoting health protocol for weddings and events)

#6. SONJO Ekspor (Promoting SMEs to export their products)

#7. SONJO PasarDesa (supporting logistic to patients in shelters using local market place)

Programs in Health

#1. SONJO Poster
(online dissemination of Covid-19)

#2. *SONJO Husada*
(supporting hospital and health center with PPE, hand sanitizer, etc)

#3. *SONJO Inovasi*
(Supporting innovators to discover new equipment for Covid-19)

#4. SoHibKoe (SONJO Husada Konvalesen)
Registering volunteers for plasma donors

#5. SONJO Database Rewangan
(Referral system for Covid-19 patients across hospitals)

#6. SONJO Husada Tangguh
(collaborative fund raising to support shelters & teams of volunteers)

#7. Database Shelter
(Developing database for monitoring of shelters)

#8. Database of Patients in Shelter (SISTERKU)

#9. SONJO Saras
(volunteers to supervise shelters)

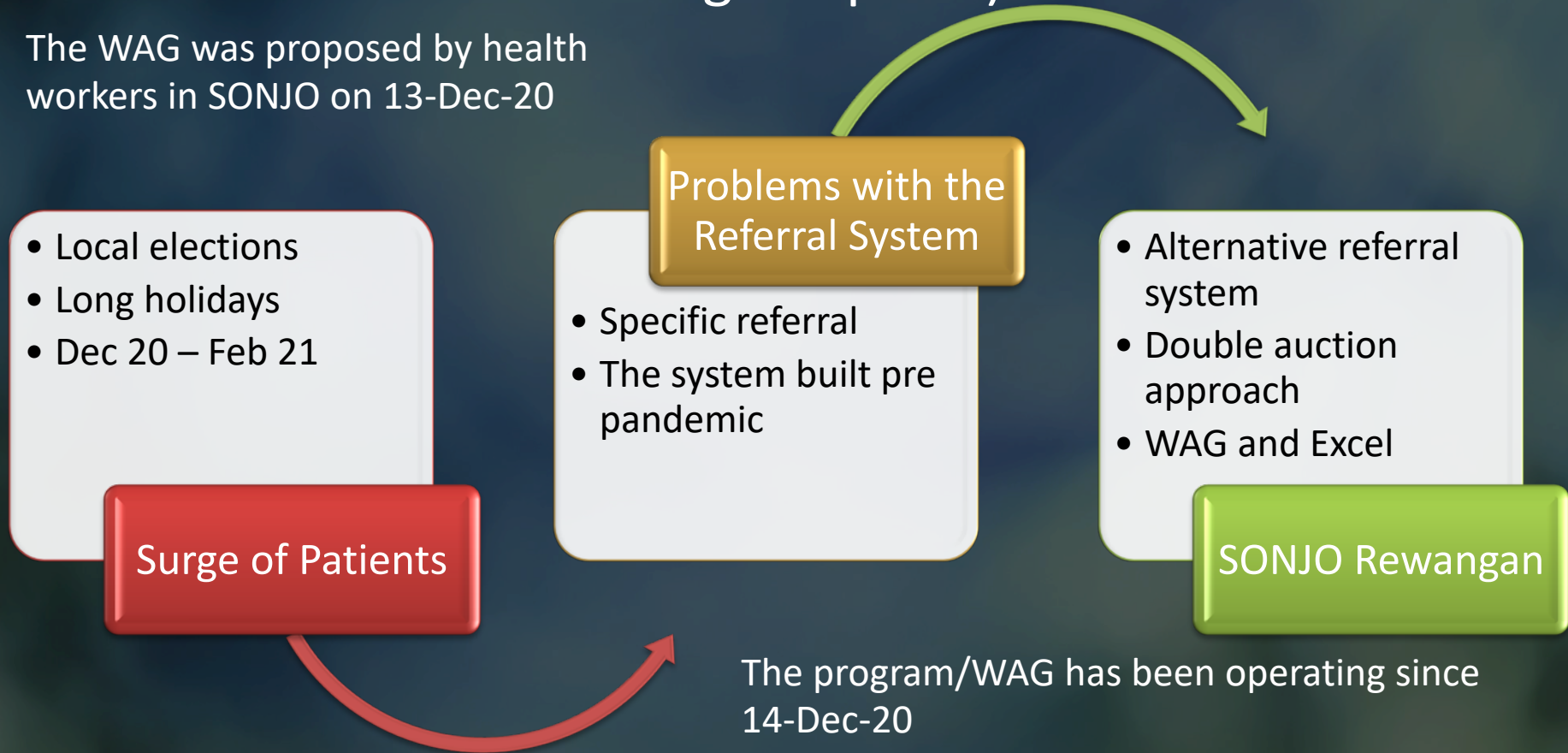
#10. LiveDokter
(Teleconsultation)

#11. *SONJO Uwuh* (a pilot project of medical waste management for shelters)

#12. SONJO Rukti Jenazah
(Infectious Dead Body Handling for COVID-19 funeral)

SONJO *Rewangan* (Patients Referral System Among Hospitals)

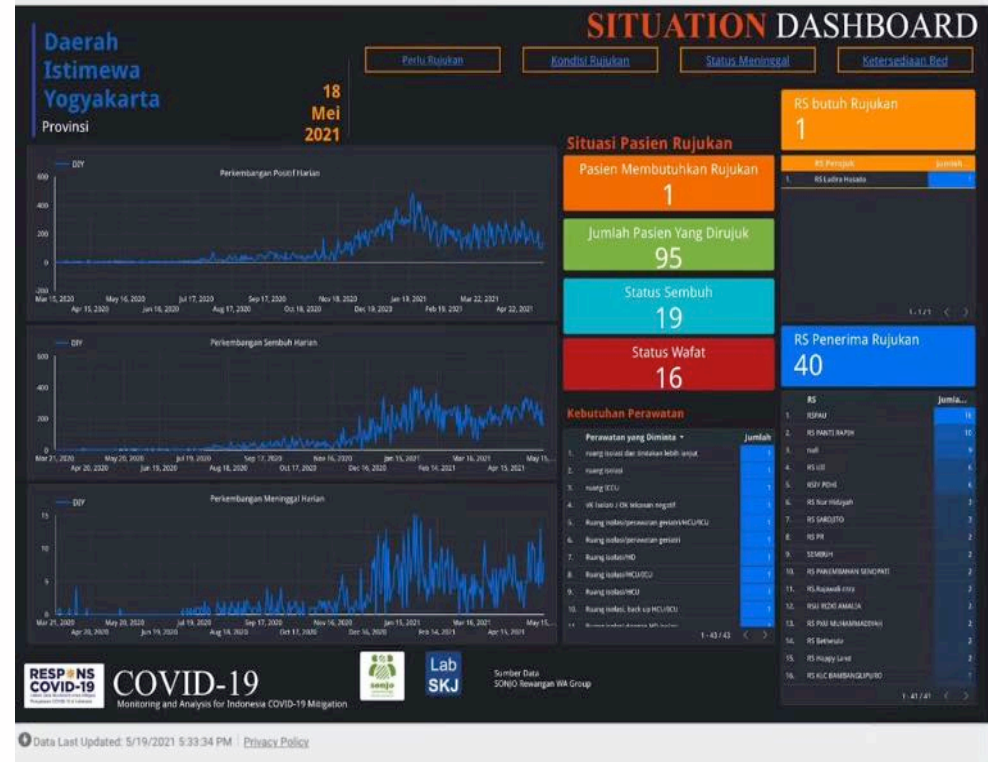
The WAG was proposed by health workers in SONJO on 13-Dec-20



During the peak of the surge patients, Dec 2020, the waiting list for the referral reached 26 patients!!

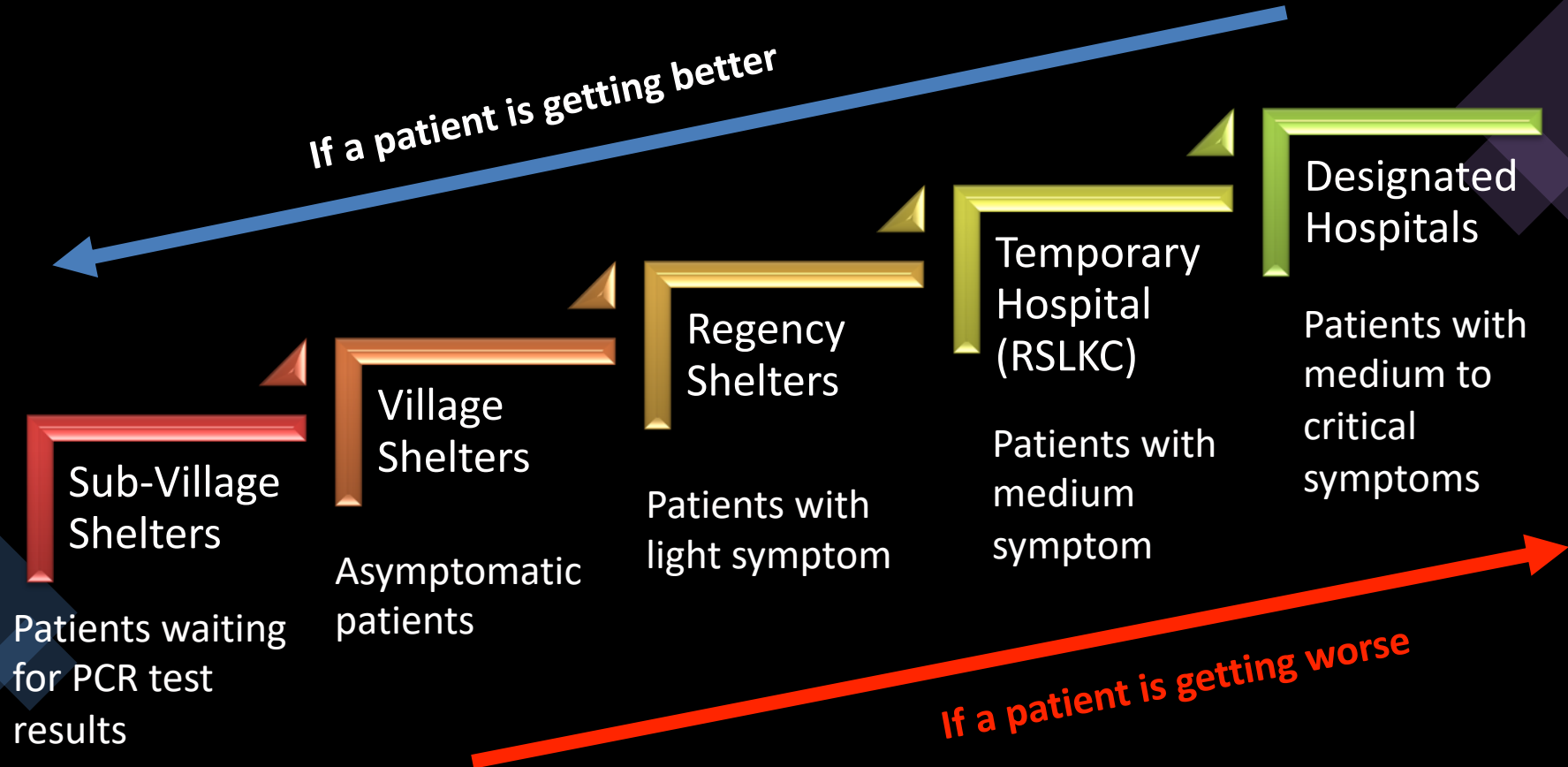
Emergency Rooms in some hospitals were closed temporarily due to the surge of patients

It drove a triple helix cooperation in the development of the resilient shelter (*shelter tangguh*) at regency level: ex Padmasuri Hospital (capacity 60 beds) in January 2021.

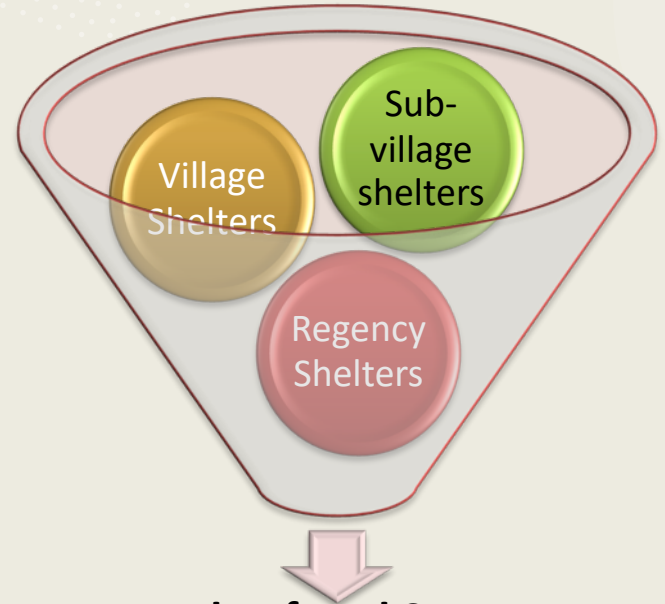
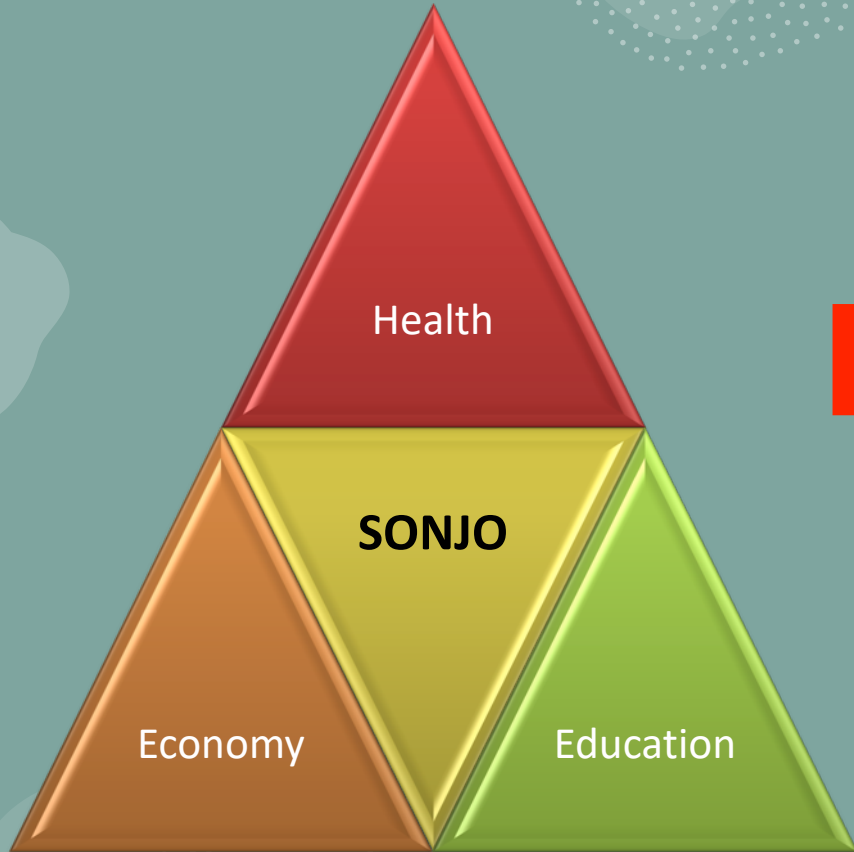


Source: <https://datastudio.google.com/s/jDFjhrJ-mHA>

Health Office of Bantul's Multilevel Shelters & Dual Referral System



Collaboration between SONJO & Bantul Health Office



**Dual Referral System
(Health Office of Bantul)**

Technical Assistant: How to Develop Shelter

- Technical Assistant #8 had been conducted by:
 - dr. Tarsisius Glory (Bantul Health Office)
 - dr. Sri Aminah (Yogyakarta Regional Hospital)
- Coverage Areas/Corporations
 - Kudus, Pati, Demak, Jepara
 - WAG Sambatan Lingkar Muria (SaLiRa)
 - Bandung Barat, Bandung, Karawang
 - WAG Rereongan Jawa Barat
 - PT. OTO, PT. IFG
 - WAG Sambatan OTO
 - PT Pembangunan Ancol
 - WAG Rupil Ancol & SONJO
 - Bangkalan, Sumenep (Madura Island)
- Materials: <https://sonjo.id/en/sonjo-migunani-en/the-extensification-of-shelter-construction-to-support-hospitals/>

SERI WEBINAR SONJO MIGUNANI | SERI 7

BIMTEK Membangun Shelter



Pembicara
Sri Aminah & Tarsisius Glory
RSUD Yogyakarta | Dinkes Bantul

Moderator
Rimawan Pradiptyo
Ketua Departemen
Ilmu Ekonomi UGM



Zoom
s.id/webinarsonjo



Live di YouTube
youtube.com/c/sonjojogja

MINGGU, 4 JULI 2021
20.00 - 21.30 WIB



sonjo.id



@sonjo.jogja



sonjo.jogja



@sonjo_jogja

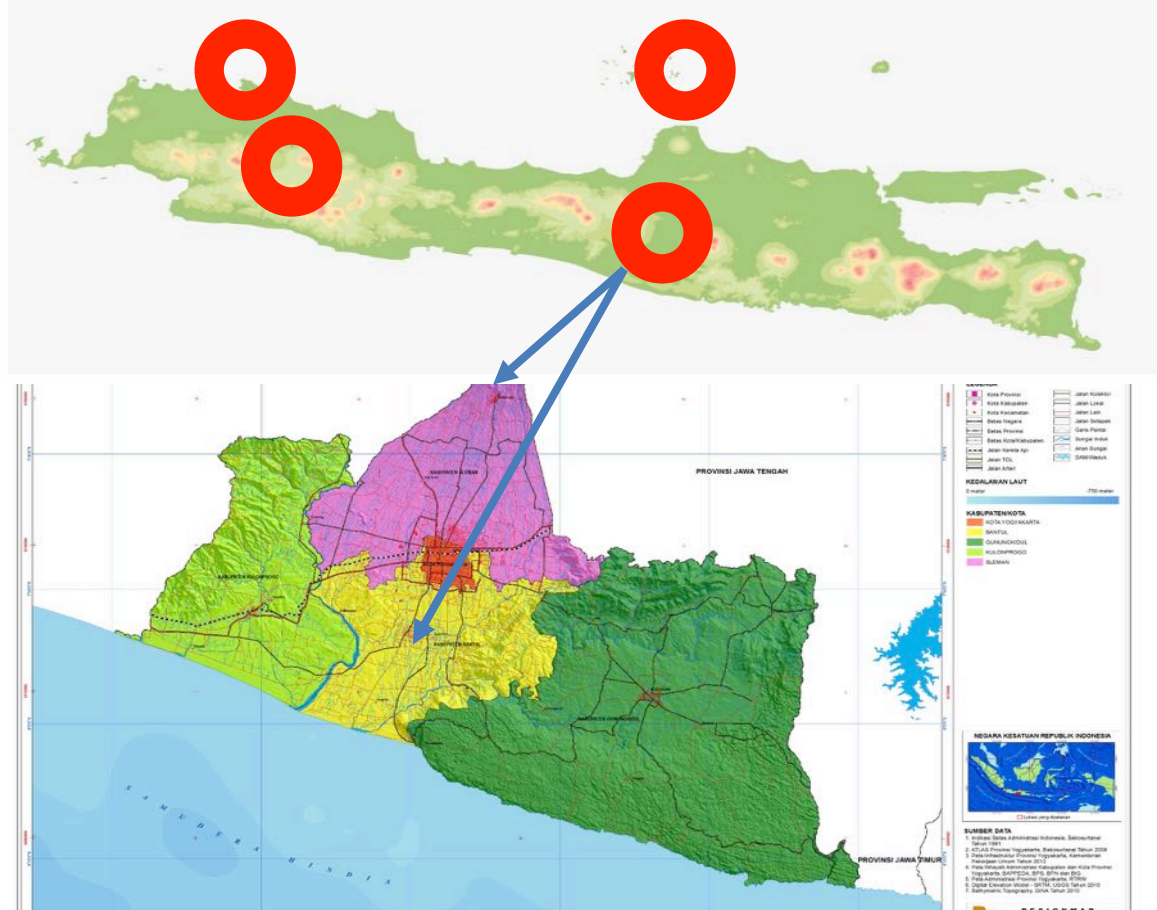
Type of Shelters

- The original version of the shelters in Bantul are: regency, village and sub-village shelters.
- The pesantren (Islamic boarding school) shelters have been developed in Sleman (Yogyakarta) and Kudus (Central Java)
- The university shelters have been developed in Sleman (Yogyakarta), Kudus (Central Java) and Bandung (West Java)
- The corporation shelters have been developed in Bogor (West Java) and Jakarta.



Mainstreaming of the Shelters through Join WAGs

- Attempts have been made to mainstream shelters outside Yogyakarta by developing join WAGs.
- The members of the WAGs are volunteers of SONJO and volunteers from other regions. (Central Java, West Java and Jakarta)
- The existence of the join WAGs enable us to transfer of knowledge and experience of developing shelters.



Join WAGs Aim to Develop Shelters

- There are variations in the development of shelters in other areas. Local conditions and also culture is heavily considered.
- WAG Sambatan Lingkar Muria (4 regencies): 22 shelters
 - MCCC – NU Peduli – SONJO – Local Society
- WAG Rereongan West Java (province): 3 shelters
 - MCCC – NU Peduli – SONJO – CISDI – PUSPA- Local Society
- WAG Sambatan OTO (1 shelter)
 - OTO Ltd & SONJO
- WAG Rupil Ancol & SONJO (1 shelter)
 - Pembangunan Ancol Ltd & SONJO

The advertisement is for 'LAYANAN ISOLASI MANDIRI DI KAMPUS UNISBA CIBURIAL' (Independent Isolation Service at UNISBA Ciburial Campus). It features a dark blue background with a building image. At the top, there is a banner with logos of various partners including UNISBA, Kampus Merdeka, and several NGOs. The main title is in large, bold, yellow and white letters. Below the title, there is a red banner with the word 'GRATIS' (Free). To the right of the title, there are four circular images showing the facility: a building exterior, bunk beds, a hallway, and a swimming pool. Below these images, there is a list of features in Indonesian. At the bottom left, there is a section titled 'FASILITAS PERKAMAR' (Room Facilities) listing amenities like private bathrooms, food, online doctor consultation, and emergency contact. At the bottom right, there is a call center number. The website URL 'WWW.UNISBA.AC.ID' is also present.

unisba UNIVERSITAS ISLAM BANDUNG

Kampus Merdeka

Emtek **PEDULI CORONA** **YPP** **PARAGON CORP**

LAYANAN ISOLASI MANDIRI DI KAMPUS UNISBA CIBURIAL **GRATIS**

- Diutamakan untuk Tenaga Kesehatan, Masyarakat Sekitar dan Keluarga Besar Unisba.
- Masa Isolasi 10 hari.
- Tersedia 100 Tempat Tidur/3 Asrama

FASILITAS PERKAMAR

- Kamar Mandi Dalam
- Makan 3x Sehari
- Konsultasi Dokter Online
- OnCall bila Keadaan Darurat

WWW.UNISBA.AC.ID

CALL CENTER : 0812-2371-3165

The Triage System & 3T

Triage

Public Health Center
Hospital

Asymptomatic or Mild Symptom

Shelters
If a patient is worsen,
he/she is referred to
hospital

Medium to Critical Symptom

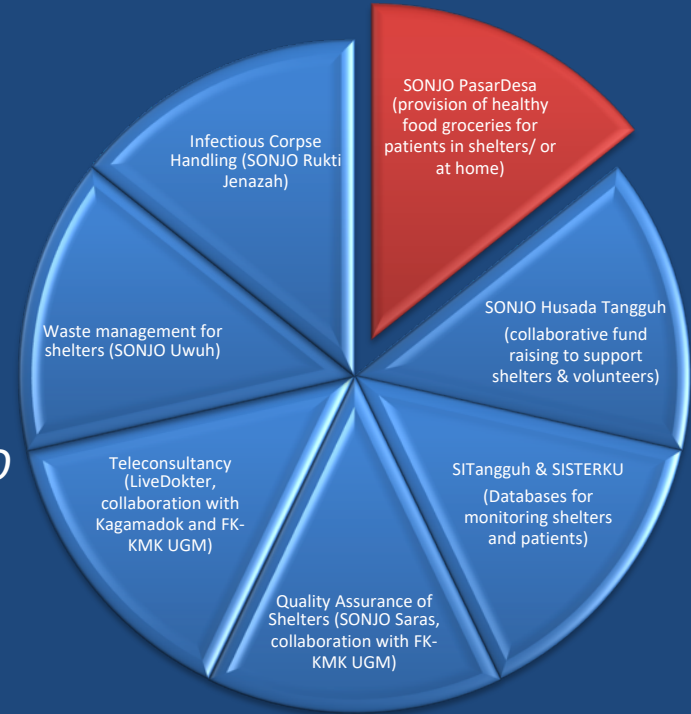
Hospital
If a patient is better,
he/she is referred to
shelters.

The system puts public health center (Puskesmas) as an important role in the triage system.

The shelters play an important role on trace, test and treatment (isolate).

Supporting Programs of Shelters

- Logistic for patients (*SONJO PasarDesa*)
- Logistic for shelters and volunteers (*SONJO Husada Tangguh*)
- Database monitoring of shelters and patients (*SITangguh & SISTERKU*)
- Quality assurance of the shelters (*SONJO Saras*, in collaboration with FK-KMK, UGM)
- Teleconsultancy (*LiveDokter*, in collaboration with Kagamadok & FK-KMK, UGM)
- Waste management for shelters (pilot project) (*SONJO Uwuh*)
- Infectious Corpse Handling (*SONJO Rukti Jenazah*):
<https://sonjo.id/en/sonjo-migunani-en/sonjo-migunani-6-infectious-covid-19-corpse-handling-by-community/>





Complexities

- The system tends to be suboptimum if the shelters do not link with a hospital
- Public health center plays a crucial role in disaster pre-hospital triage, however, the existence of the shelters depends on head of region (village/regency)
- The bottom-up approach tend to be pursued by *pesantren*, university, and corporation
- People in the neighborhood may refuse the shelter, but this may be solved by pro-active local government.



Matur Sembah Nuwun

+
o •

*Rimawan
Pradiptyo*



A close-up, slightly blurred photograph of a spiral-bound notebook. The notebook is open to a page with horizontal lines. A silver and black pen is resting on the page. The spiral binding is visible on the left side. The overall tone is warm and professional.

Appendix: Supporting Programs

SITangguh: Database of Shelters in Yogyakarta

- The WAG of Database Shelter was formed on 11 May 2021.
- We developed SITangguh (Information System of Shelter *Tangguh*)
- Aims: Developing database of shelters in the Province of Yogyakarta to mitigate the second wave of the Covid-19.
- Thus far 60 shelters are registered in Bantul and Sleman. Currently we support Sleman regency to develop more shelters to anticipate the 2nd wave surge of patients.
- The variation across regencies is due to the local government policies.





SISTERKU

- SISTERKU is an IT system of patients in shelters
- All patients in a shelter have to join a WAG
- They have to report their temperature and saturation of O_2 in regular basis using WAG.
- SONJO has developed SISTERKU to help the health office of Bantul in managing and monitoring patients across shelters
- This system has been extended to include teleconsultation. This program will be launched within a week.



SONJO Husada Tangguh

- The WAG *SONJO Tangguh* was formed on 6 Jan 2021
- Members: head of villages, CSOs, volunteers (MCCC, etc), health experts, PPE producers, politicians, bureaucrats, etc.
- Aims: promoting collaboration across stakeholders to support shelters
- It has a program of identifying demand and supply of provisions for the shelters
- Collaborative fund raising has been done by several CSOs in the WAG.
- The donation has been used to support:
 - Shelters in Bantul, Sleman and Kudus
 - Teams of volunteers in Bantul, Sleman, Kulon Progo, Gunung Kidul and Yogyakarta City
 - Hospitals in Bantul, Sleman, Kulon Progo
 - Hundreds of isolation patients in *pesantren* in Bantul and Sleman, and self isolation patients in Yogyakarta City.

Konser Amal Virtual
Sabtu, 13 Maret 2021 | 19:00 WIB

**Life,
Passion,
& Music**
Vol. 2

Tribute to Prof. Iwan Dwiрахasto

Adi Utarini | Budi Utomo Prabowo | Safarina G. Malik | Jodi Visnu
Putri K. Larasati | Afriza Animawan | Rachmat Zia | Heni Kusumawati

**DONATION
NEEDED!**
Shelter Tangguh & APD di DIY

Tolong-tinolong penyediaan Shelter Tangguh.
RS penuh, banyak pasien Covid-19 tidak
dirawat di RS.
**Saatnya bergerak dengan shelter
inisiatif masyarakat!**
Salurkan bantuan Anda melalui kanal berikut:

LazisNU DIY
Bank Mandiri
No. Rek. 137-000-1926-886
Konfirmasi: 0811-3601-926

Yayasan Rumpun Nurani
Bank Syariah Mandiri
No. Rek. 7114-7814-49
Konfirmasi: 0821-3467-9840

SONJO Saras

- The program provides technical assistant to village, sub-village and also *pesantren* (Islamic boarding school) to develop, and to ensure the quality of the shelters.
- Students and lecturers from the Faculty of Medicine, the Faculty of Pharmacy of several universities joint this program.
- Dr. Sri Aminah and her team wrote guide books on how to develop both village and pesantren shelters. The guide books are available for free in SONJO.id.



KAGAMADOK BERBAKTI

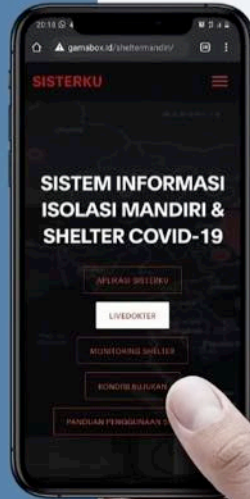
KELUARGA ALUMNI UNIVERSITAS GADJAH MADA KEDOKTERAN,
FAKULTAS KEDOKTERAN, KESEHATAN MASYARAKAT, DAN KEPERAWATAN UGM,
SERTA SAMBATAN JOGJA

LIVEDOKTER KONSULTASI ONLINE

Fasilitas konsultasi online **GRATIS**
untuk penderita Covid-19 yang
sedang melakukan isolasi mandiri di
rumah atau di selter karantina.

LiveDokter dapat diakses di
gamabox.id/livedokter/

Mulai **21 Juli 2021**



LiveDokter (Online Consultation)

- This teleconsultation and telemedicine programs are the collaboration of Kagamadok - FK-KMK UGM and SONJO
- The program has attracted about 200 volunteer medical doctor (some of them are quite senior)
- The coverage of the program: to all people in Indonesia
- SISTERKU (apps for monitoring patients) has been developed by Faculty of Science of UGM team.
- The first 24 hours, the program has attracted more than 250 inquiries.

"Kepanikan adalah separuh penyakit, ketenangan adalah separuh obat,
& kesabaran adalah permulaan kesembuhan."
- Ibnu Sina

Tata Cara Pemulasaraan Jenazah Covid-19



Pembicara
Dumono & Tri Didik Wibowo
RSUP Dr Sardjito

Moderator
Beta Ahlam Gizela
FK-KMK UGM



Zoom
s.id/webinarsonjo



Live di YouTube
youtube.com/c/sonjojogja

MINGGU, 6 M
15.30 - 17.00



sonjo.id



@sonjo.jogja



sonjo.jogja



@sonjo.jogja

SONJO Rukti Jenazah

- If a COVID-19 patient passed away at home, the community has to handle the infectious corpse
- Handling infectious COVID-19 corpses should be conducted correctly to avoid further spread of the COVID-19
- At the same time, this should also conform with guidance of the religions on handling the corpses.
- This program provides guidance on how to handle infectious COVID-19 corpses from the perspective of Islam and Christianity. The guidance may be downloaded for free at: <https://sonjo.id/en/uncategorized-id/sonjo-migunani-6-infectious-covid-19-corpse-handling-by-community/>

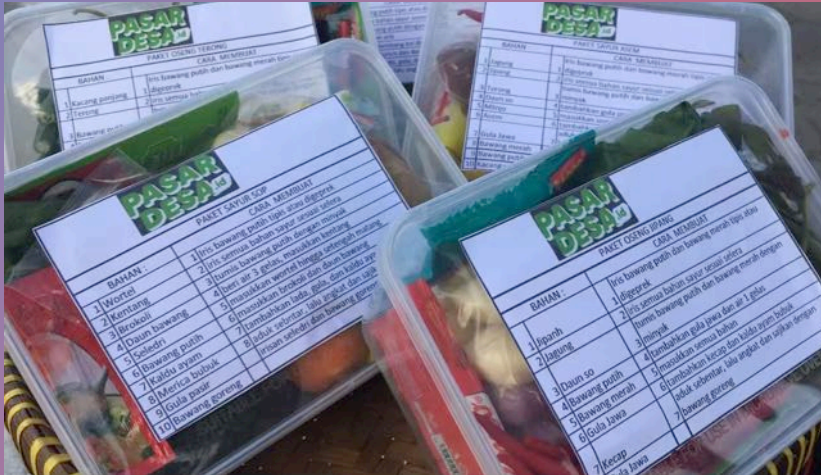
Pilot Project: *SONJO Uwuh*



- There is no intervention using needle in the shelters, however, the shelters produced substantial medical waste (masks, PPEs, etc.).
- The project is a collaborative work between SONJO and Panggunharjo village, which has an incinerator.
- The projects covers 80 *dasawisma* (ten households in each *dasawisma*) in Panggunharjo village. Extension will be conducted to cover additional 10 shelters of the neighboring villages.
- The pilot project is for three month commencing April 2021.

SONJO-PasarDesa

- There is a budgetary constraint for the operational costs of the shelters.
- A pilot project was conducted in Bantul, Sleman and Kudus (each of which 200 packages)
- Currently the program has been designated to pesantren and self-isolation with low income HH.
- Each patient of the shelter receive food voucher worth USD 12.5 (Rp180.000) for 10 days, and the healthy groceries are provided by pasardesa.id.
- The program links among shops, farmers, traders, and delivery courier to patients in the shelters or in their home.





SONJO Tetuko (Mass Vaccination)

- This is a join project among regency health office – PKK (women association) – SONJO
- It was formed prior to the Emergency PPKM
- The program will be held after the Emergency PPKM.